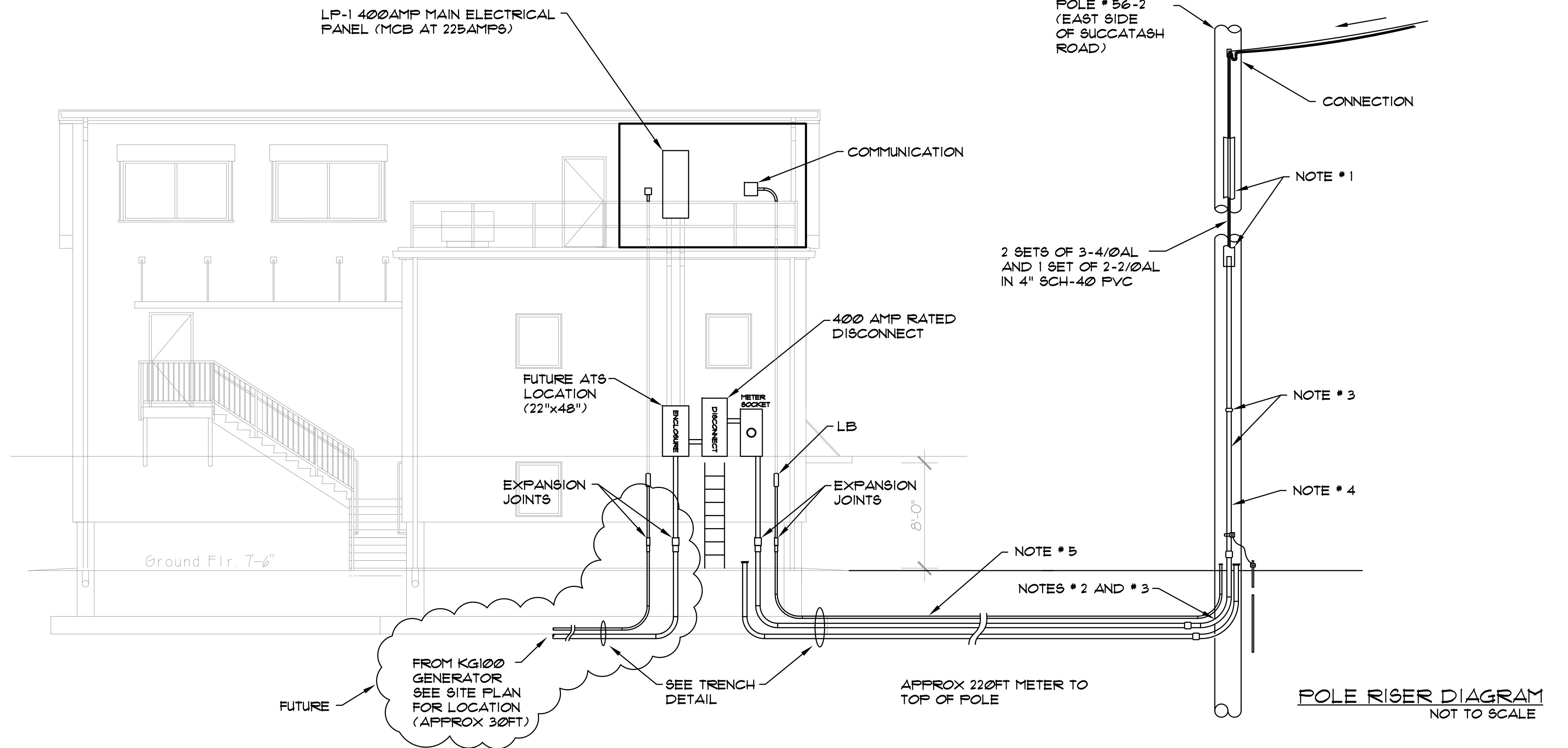


**WEST ELEVATION**  
NOT TO SCALE



**NORTH ELEVATION**  
NOT TO SCALE

**NOTES FOR POLE RISER DIAGRAM:**


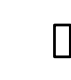
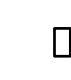
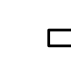
1. U-GUARD OR SCH-40 PVC
2. GALVANIZED STEEL CONDUIT AND BEND ARE TO BE USED, THEY SHALL BE GROUNDED BY BONDING TO AN APPROVED U-BOLT TYPE GROUND CLAMP 6"(150mm) FROM THE TOP OF GRADE. A 24"(600mm) CONDUCTOR SHALL BE PROVIDED TO EXTEND TO THE COMPANY'S GROUNDING CONDUCTOR. THE CONDUCTOR SHALL BE SIZED AS REQUIRED BY THE NEC ARTICLE 250, BUT IN NO CASE SHALL IT BE SMALLER THAN #4 AWG COPPER. RECOMMEND USE OF CORROSION RESISTANT BEND IN LOCATIONS SUBJECT TO HIGHWAY SALTING.
3. GALVANIZED STEEL CONDUIT, GALVANIZED STEEL SWEEP, ATTACHMENT CLAMPS, GROUNDING CLAMP AND 24" GROUNDING CONDUCTOR SHALL BE FURNISHED AND INSTALLED BY CUSTOMER NORMALLY. THE CONDUIT SHALL RISE ON THE SIDE OF THE POLE AWAY FROM TRAFFIC UP TO 8FT(2.5m) MINIMUM TO 11FT(3.4m). CONSULT COMPANY FOR PROPER LOCATION ON POLE.
4. PIPE STRAPS, INSTALL AT NOT MORE THAN 30"(750mm) INTERVALS
5. THE CONDUIT BURIAL DEPTH SHALL BE 24"(150mm) MINIMUM TOP OF CONDUIT. SCH-40 PVC CONDUIT ALLOWED HERE.

REVISIONS:					

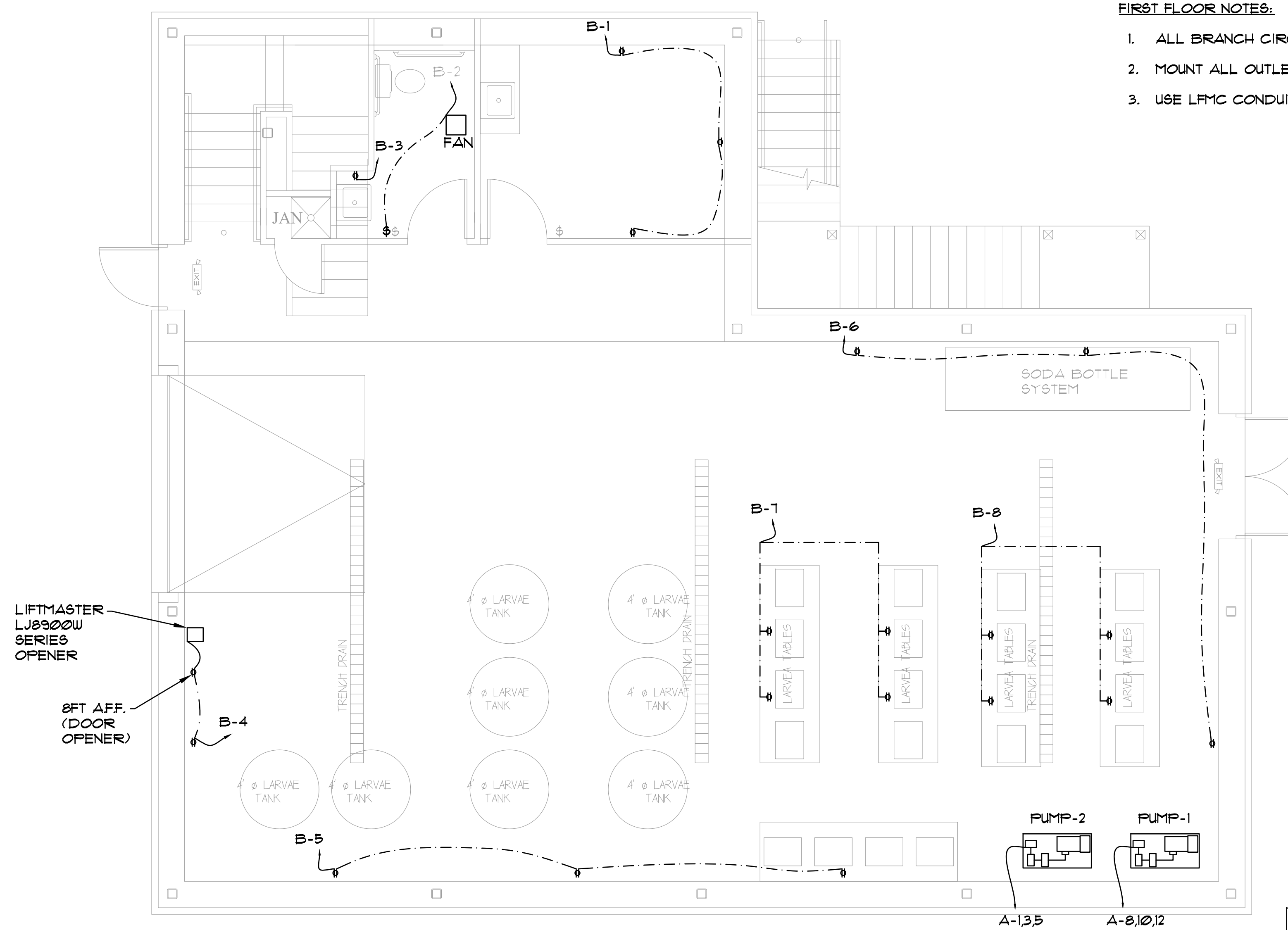
MARC O. ST. JEAN, P.E.  
ELECTRICAL ENGINEERING DESIGN  
AND CONSULTING  
COMMERCIAL, INDUSTRIAL AND MARINE  
15 ESTATE DRIVE  
EXETER, RI 02822  
ms.j.e.redestgn@gmail.com  
401.363.1153

Drawn:   
Checked: 10/12/22  
Scale:   
Date: 4/21/21

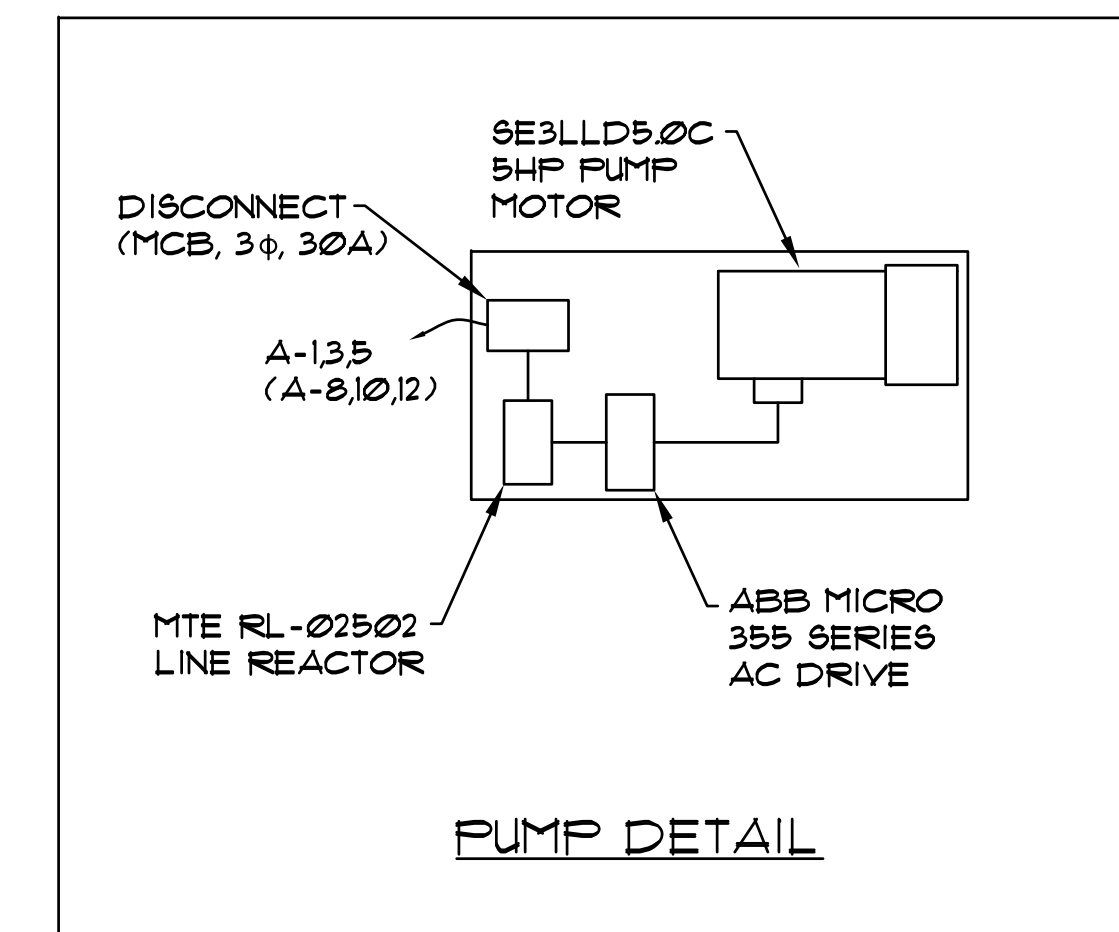
MATUNUCK HATCHERY  
650 SUCCOTASH RD.  
SOUTH KINGSTOWN, RI  
MAIN POWER

SYMBOL	ITEM	MANUFACTURER	CATALOG NUMBER	DESCRIPTION	NOTES
	PUMP MOTOR (2)	PACER	9E3LLD5.0C	5HP, 3 $\phi$ , 280GPM 208V	FINAL LOCATION T.B.D.
	AC DRIVE (2)	ABB	ACS355-03U-11A6-2	5HP AC MICRO DRIVE	PUMP OPERATION
	LINE REACTOR (2)	MTE CORPORATION	RL-02502	5HP, 208V, 5%	PUMP OPERATION
	DOOR OPENER	LIFTMASTER	LJ8900W	COMMERCIAL GRADE LIGHT DUTY, 120V, 2A	SECTIONAL DOOR W/ TORSION ASSEMBLY

EQUIPMENT SCHEDULE



FIRST FLOOR ELECTRICAL PLAN  
NOT TO SCALE



FIRST FLOOR NOTES:

1. ALL BRANCH CIRCUITS ORIGINATE FROM CEILING.
2. MOUNT ALL OUTLET/SWITCHES AT 48 AFF.
3. USE LFMC CONDUIT

MATUNUCK HATCHERY  
650 SUCCOTASH RD.  
SOUTH KINGSTOWN, RI  
1ST FLOOR ELECTRICAL

PROJ: MOB-02

DWG. NO.

E-2

SHEET 2 OF 6

MARC O. ST. JEAN, P.E.

ELECTRICAL ENGINEERING DESIGN  
AND CONSULTING  
COMMERCIAL, INDUSTRIAL AND MARINE

15 ESTATE DRIVE  
EXETER, RI 02802  
ms.j.e.design@gmail.com

REVISIONS:

APPROVED:

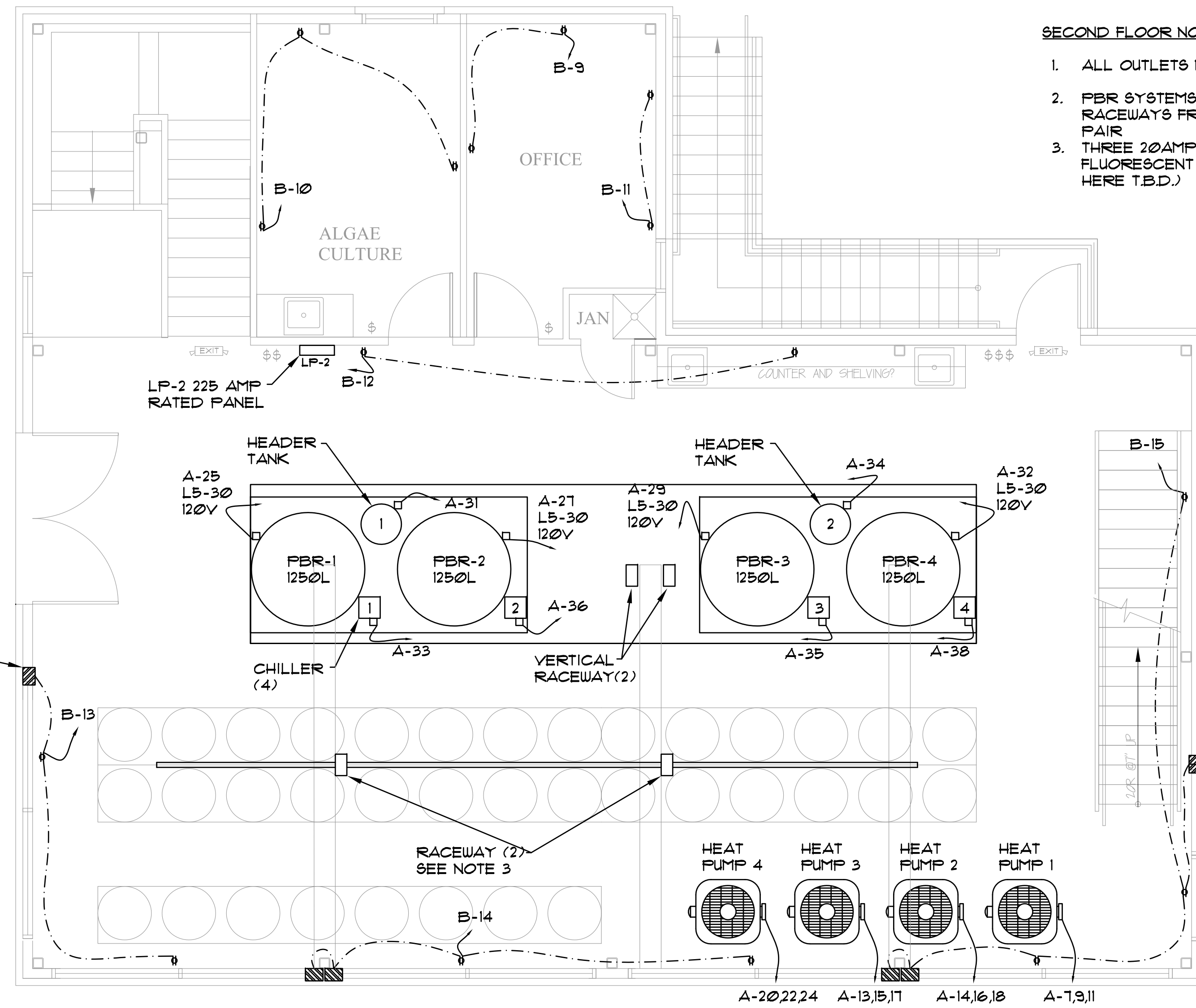
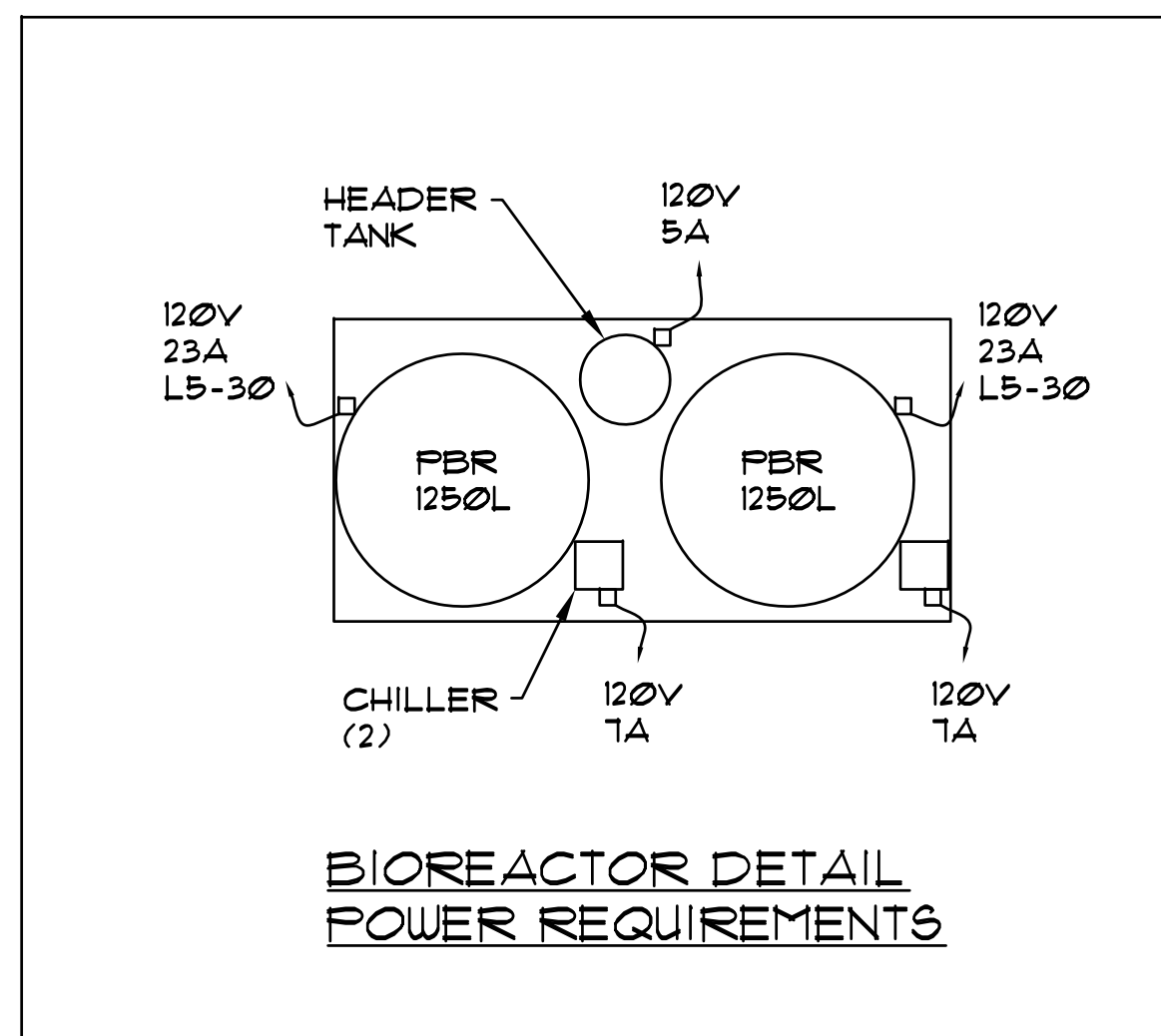
4/13/21

Drawn: 10/12/22

Checked: 10/12/22

Scale: 1"=1'-0"

Date: 4/27/21



**SECOND FLOOR NOTE:**

1. ALL OUTLETS MOUNT AT 48 AFF.
2. PBR SYSTEMS WIRED FROM TWO VERTICAL RACEWAYS FROM CEILING. ONE RACEWAY PER PBR PAIR
3. THREE 20AMP CIRCUITS NEEDED HERE FOR FLUORESCENT LIGHT TUBES (30). (MAY USE LED HERE T.B.D.)

SYMBOL	ITEM	MANUFACTURER	CATALOG NUMBER	DESCRIPTION	NOTES
	BIO-REACTOR (4)	INDUSTRIAL PLANKTON	PBL 1250L	ALGAE PHOTOBIOREACTOR	PACKAGE INCL. HEADER TANK AND CHILLER
	HEAT PUMP (4)	AQUALOGIC	HP-33	HEAT COOL PUMP 208V, 3φ	FINAL LOCATION T.B.D.
	MOTORIZED SHUTTERS	SHADE & SHUTTER SYSTEMS Inc.	T.B.D.	4 UNITS SOUTH SIDE 1 UNIT WEST SIDE 1 UNIT EAST SIDE	SOUTH SIDE WIRED IN PAIRS AS SHOWN. CONTROL LOCATIONS T.B.D.

**EQUIPMENT SCHEDULE**

REVISIONS:

MARC G. ST. JEAN, P.E.

ELECTRICAL ENGINEERING DESIGN AND CONSULTING  
COMMERCIAL, INDUSTRIAL AND MARINE

15 ESTATE DRIVE  
EXETER, RI 02822  
ms.j.e.redesign@gmail.com

APPROVED:

4013031153

Drawn: 10/12/22  
Checked: 10/12/22  
Scale:  
Date: 4/21/21

MATUNUCK HATCHERY  
650 SUCCOTASH RD.  
SOUTH KINGSTOWN, RI  
2ND FLOOR ELECTRICAL

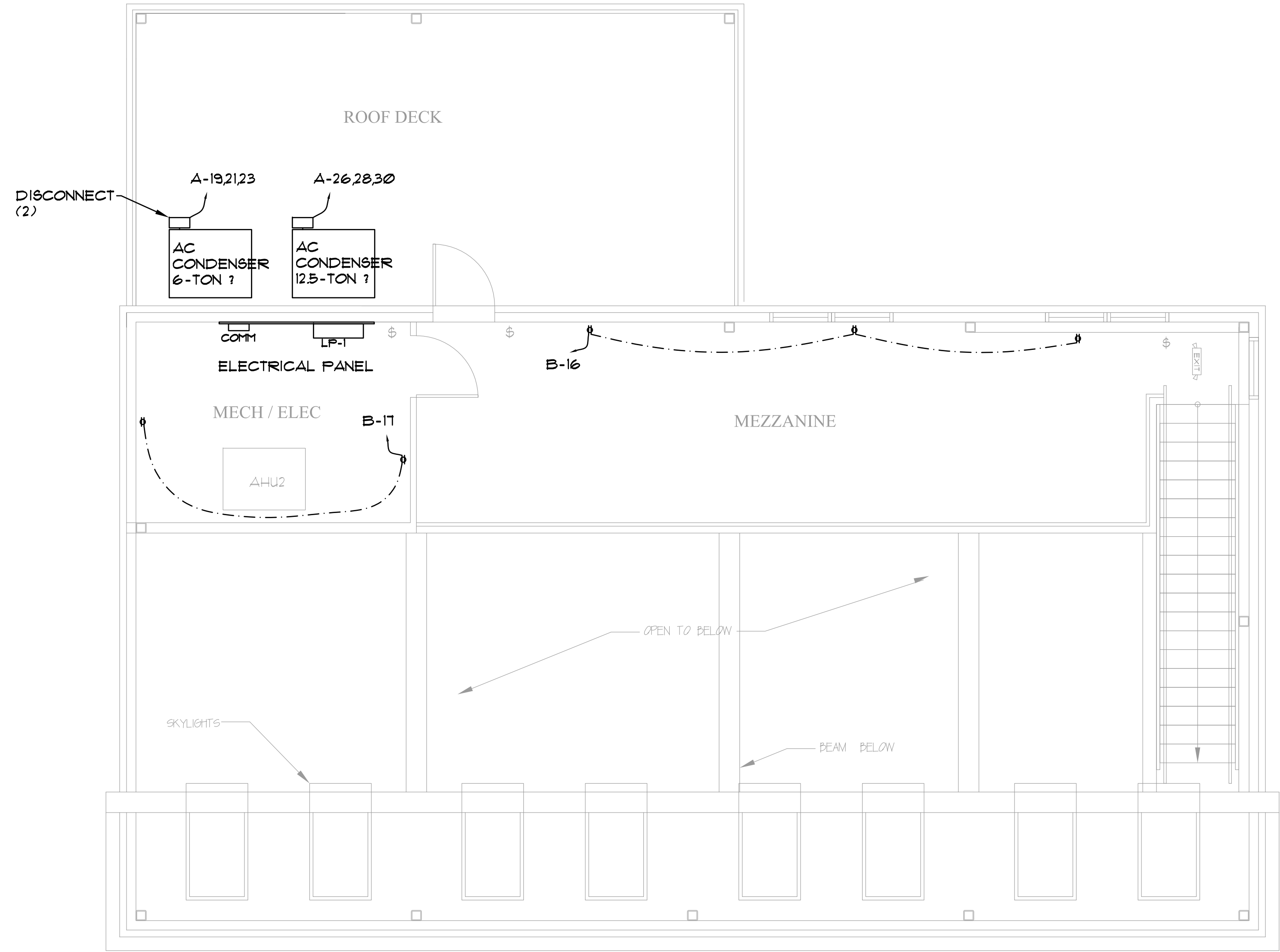
PROJ: MOB-02

DWG. NO.

E-3

SHEET 3 OF 6

**NOTE:**  
 AC CONDENSER SIZE TO BE DETERMINED. ASSUMED CURRENTLY TO BE 6-TON FIRST FLOOR AND 12.5-TON SECOND FLOOR  
 6-TON: 26AMPS, MCB=40AMP  
 12.5-TON: 52AMPS, MCB=80AMP



**MEZZANINE AND ROOFTOP ELECTRICAL PLAN**  
 NOT TO SCALE

NO.	REVISIONS:

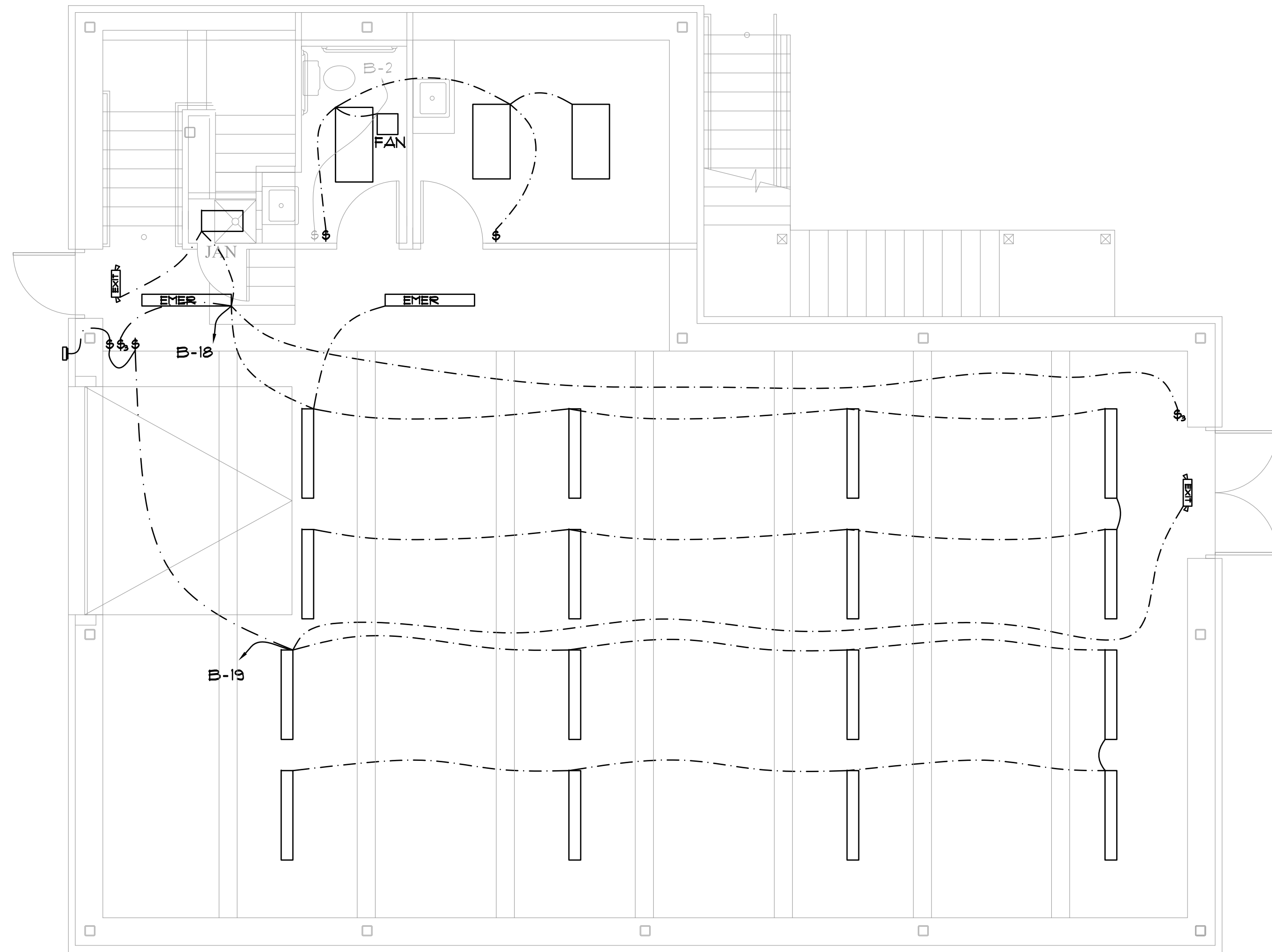
**MARC G. ST. JEAN, P.E.**  
 ELECTRICAL ENGINEERING DESIGN  
 AND CONSULTING  
 COMMERCIAL, INDUSTRIAL AND MARINE  
 15 ESTATE DRIVE  
 EXETER, RI 02802  
 ms.j.e.redes1gn@gmail.com  
 401-363-1153  
 APPROVED:

Drawn:  
 Checked: 10/12/22  
 Scale:  
 Date: 4/27/21

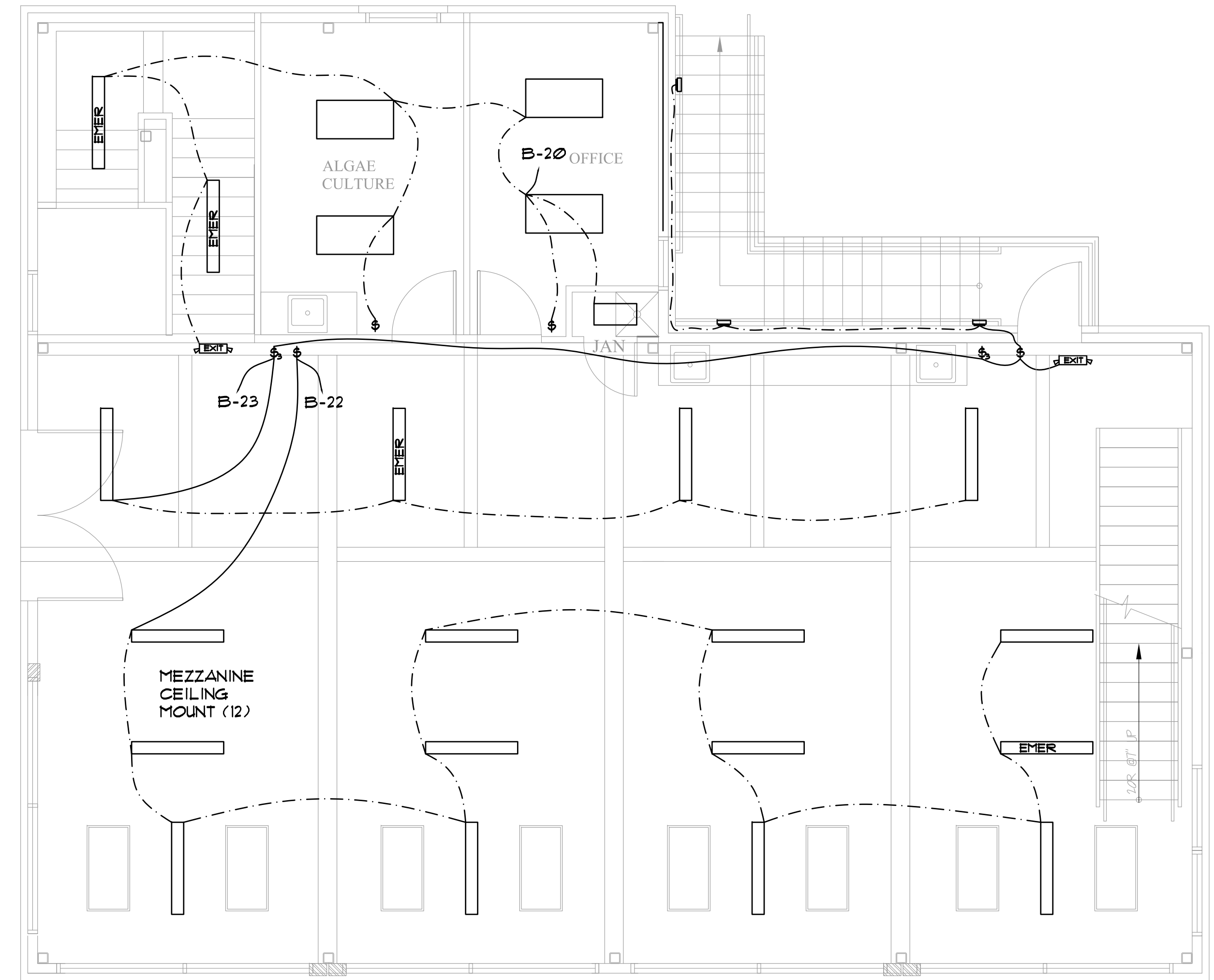
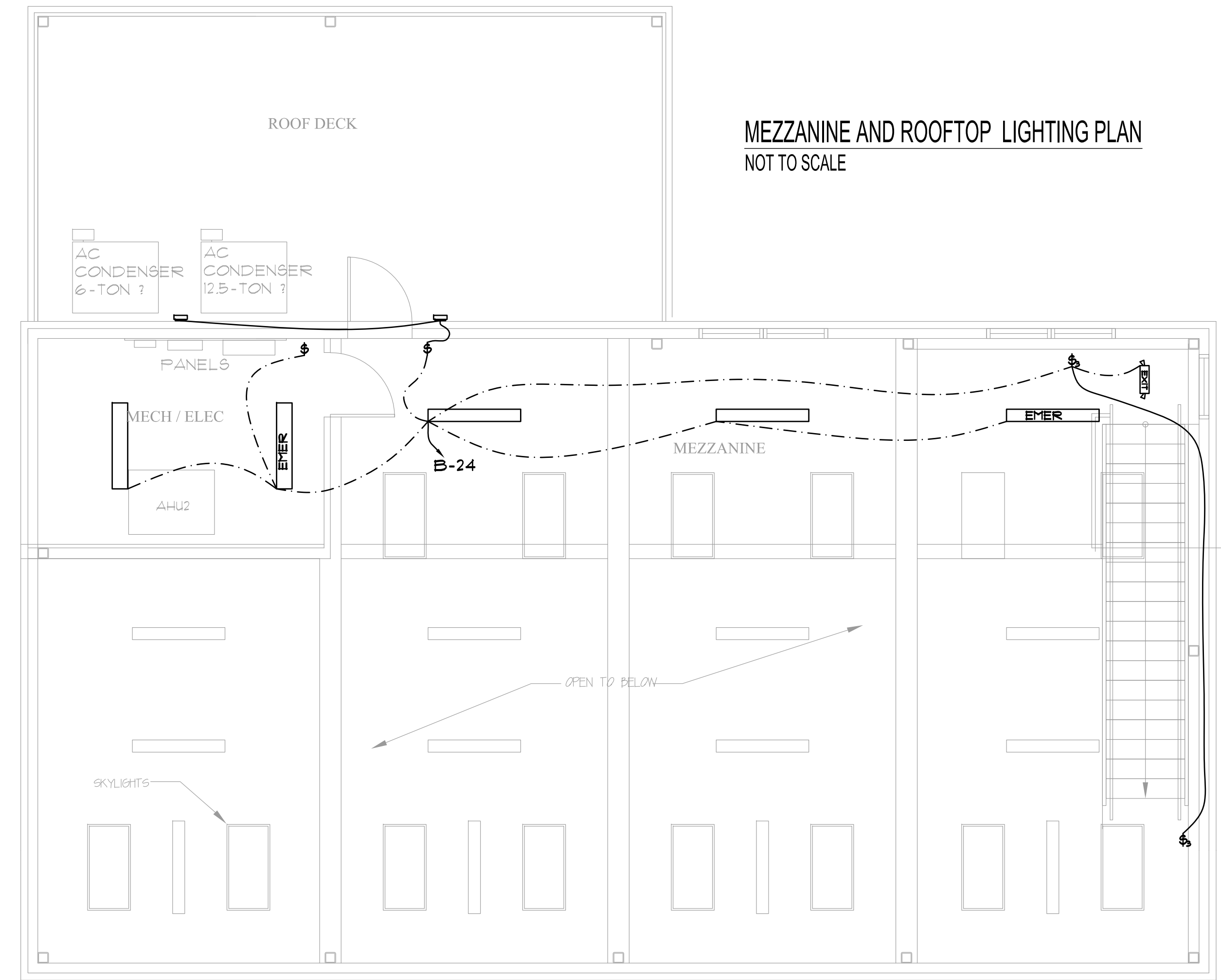
MATUNUCK HATCHERY  
 650 SUCCOTASH RD.  
 SOUTH KINGSTOWN, RI  
 MEZZANINE/ROOF ELECTRICAL

SYMBOL	ITEM	MANUFACTURER	CATALOG NUMBER	DESCRIPTION	NOTES
	VAPOR TIGHT FIXTURE (33)	LITHONIA	FEM L48 IMAFI MD MVOLT GZ10 80CRI	6000 LUMENS, 35K 32 WATTS, DIMMABLE	MOUNT AT 10 AFF. (1ST) SURFACE MOUNT 2ND FLOOR
	VAPOR TIGHT EMER FIXTURE (8)	LITHONIA	FEM L48 AS ABOVE EL14L (OPTION)	AS ABOVE WITH EM BATTERY PACK	LOCATIONS AS SHOWN
	LED RECESSED TROFFER (7)	LITHONIA	2BLT4 40L ADP LP835 GZ10	2X4, 4000 LUMENS, 3500K	OFFICE FIXTURE DIMMABLE
	LED RECESSED TROFFER (2)	LITHONIA	BLT2 10L ADP LP835 M8D1AADCX	1x2 TROFFER, 1066 LUMENS 8 WATTS	JANITOR CLOSET W/ OCCUPANCY SENSOR
	EXTERIOR WALLPACK (6)	LITHONIA	WFXI LED P1 40K MVOLT	1500 LUMENS	MOUNT TO EXTERIOR
	EXIT LIGHT (5)	LITHONIA	LHQM LED R 4 WATTS	EXIT/UNIT COMBO AS SHOWN	MOUNT ABOVE DOORWAY AS SHOWN

EQUIPMENT SCHEDULE



FIRST FLOOR LIGHTING PLAN  
NOT TO SCALE



SECOND FLOOR LIGHTING PLAN  
NOT TO SCALE

REVISIONS:

MARC G. ST. JEAN, P.E.

ELECTRICAL ENGINEERING DESIGN  
AND CONSULTING  
COMMERCIAL, INDUSTRIAL AND MARINE

15 ESTATE DRIVE  
EXETER, RI 02822  
ms.j.e.redestgn@gmail.com

APPROVED:

4013631153

Drawn:

Checked: 10/12/22

Scale:

Date: 4/21/21

MATUNUCK HATCHERY

650 SUCCOTASH RD.  
SOUTH KINGSTOWN, RI

LIGHTING PLAN

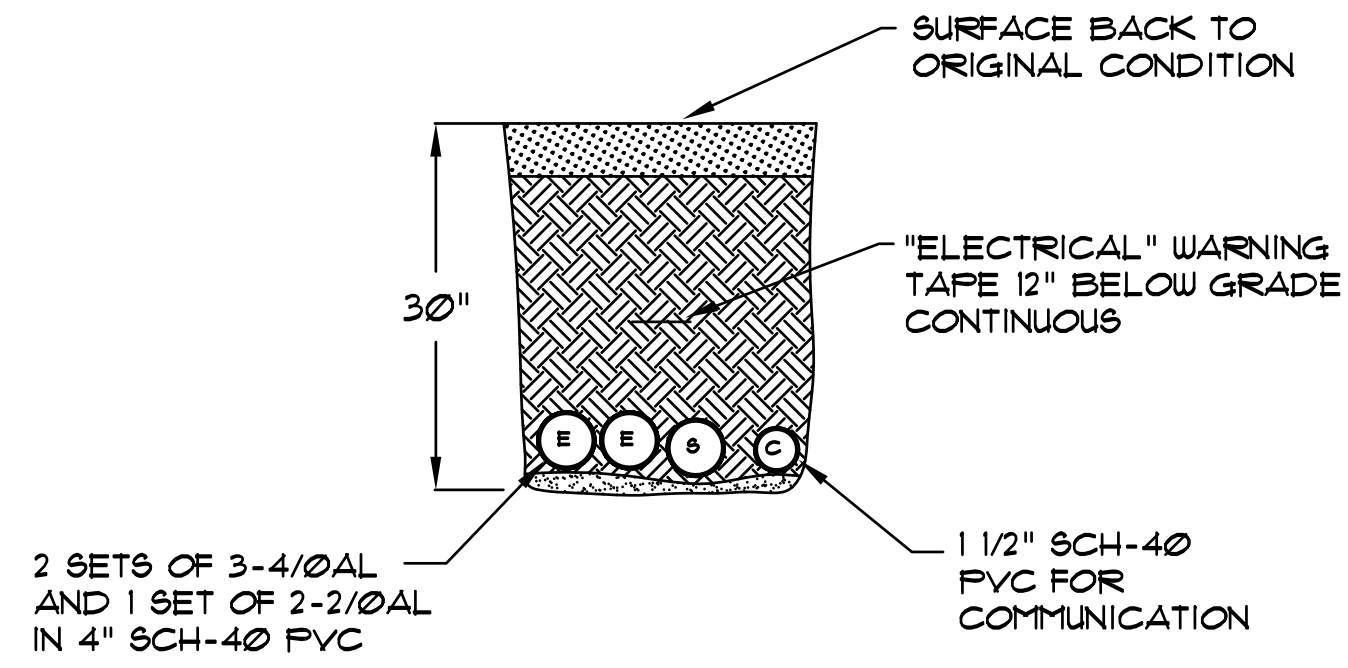
PROJ: MOB-02

DWG. NO.

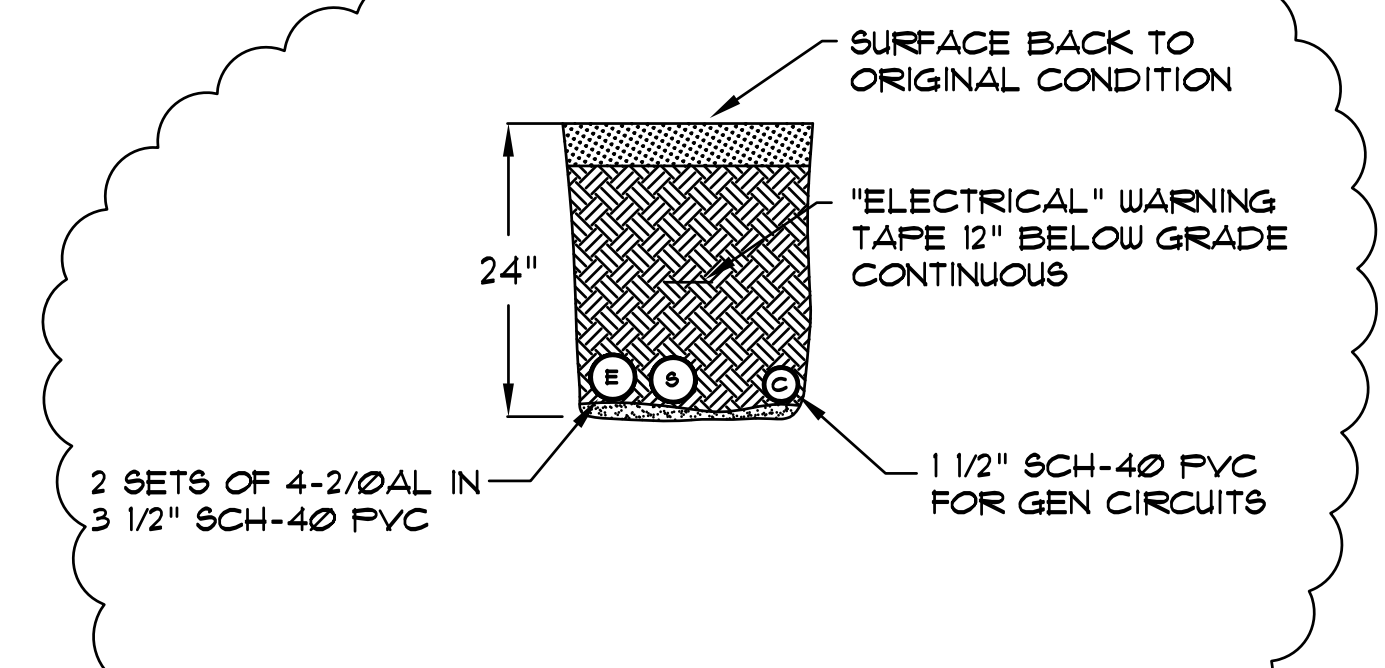
E-5

SHEET 5 OF 6

**TRENCH DETAILS:**  
 4" SCH-40 PVC FOR SECONDARY FEED TO METER SOCKET WITH 2 SETS OF #4/0 AL AND 1 SET OF 2 #2/0 AL.  
 1-1/2" SCH-40 PVC FOR COMMUNICATION.  
 TOP OF SECONDARY ELECTRICAL CONDUIT SHALL BE 24" DEPTH MINIMUM (TOP OF CONDUIT).  
 PROVIDE 3/4"-FULL STRING IN EACH CONDUIT.  
 PROVIDE 2" FINE SAND IN BOTTOM OF TRENCH AS SHOWN.  
 NO GRAVEL MATERIAL OVER 2" DIAMETER IN TRENCH

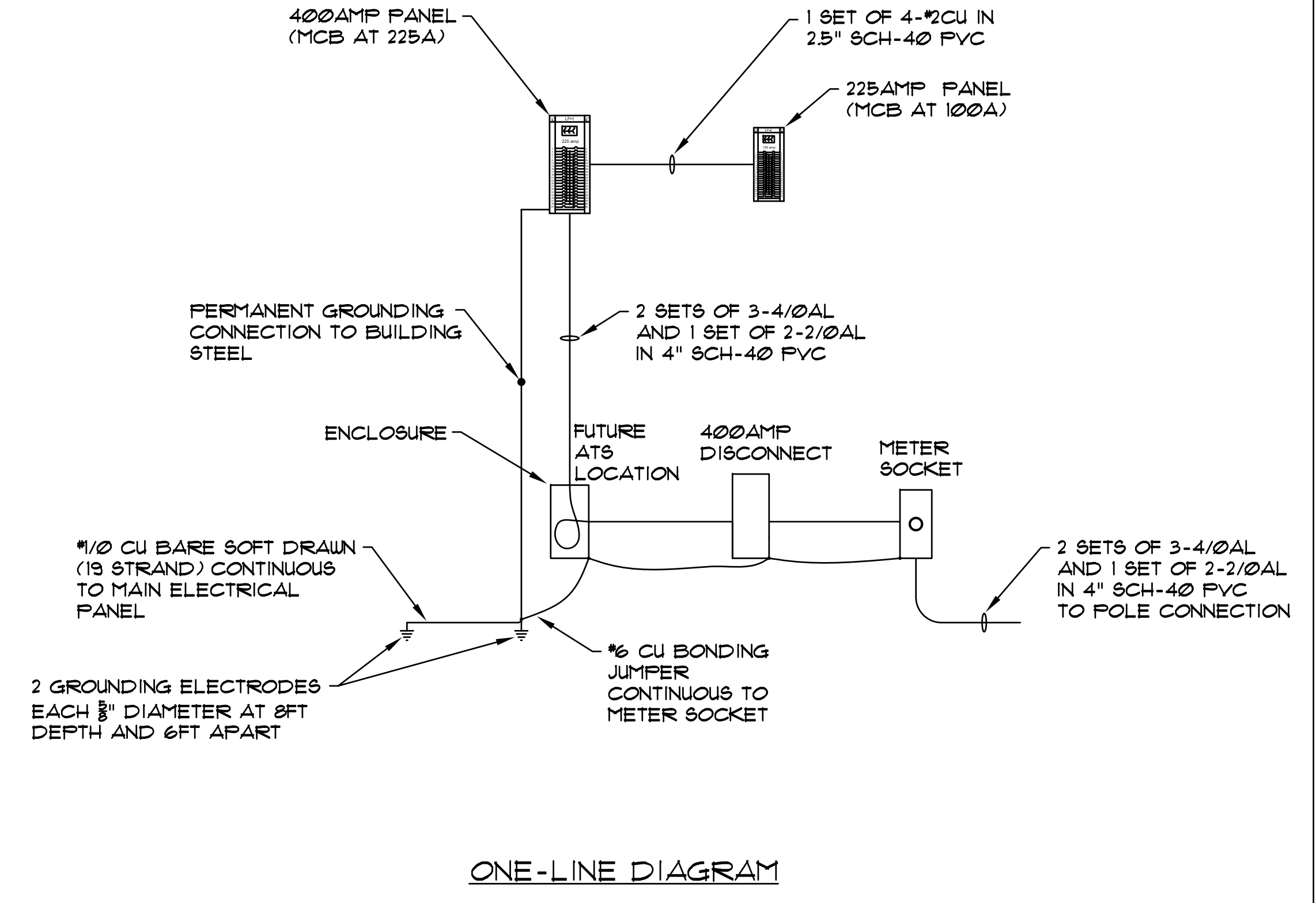


**TRENCH DETAIL SECONDARY**  
 NOT TO SCALE



**TRENCH DETAIL GENERATOR**  
 NOT TO SCALE

**NOTE:**  
 AC CONDENSER SIZE TO BE DETERMINED. ASSUMED CURRENTLY TO BE 6-TON FIRST FLOOR AND 12.5-TON SECOND FLOOR  
 6-TON: 26 AMP, MCB=40 AMP  
 12.5-TON: 52 AMP, MCB=80 AMP



**ONE-LINE DIAGRAM**

PANELBOARD LP-1				
LOCATION: MECH ROOM (MEZZANINE LEVEL)		BRANCHES: 20/1 OR AS NOTED		
TYPE: EATON CH424PM400, 400AMP RATED		BUSSING: 22 KAIC CU		
SERVICE: 208Y/120 V, 3 P/4 W		FEED: BOTTOM		
MAIN: 225AMP MCB		MOUNTING: FLUSH		
BRANCH CIRCUIT DESCRIPTION	CKT NO.	A B C	CKT NO.	BRANCH CIRCUIT DESCRIPTION
PUMP-1 (30A) #10AWG	1		2	LP-2 (100 AMP) #2AWG
	3		4	
	5		6	
HEAT PUMP-33-1 (20A) #12AWG	7		8	PUMP-2 (30A) #10AWG
	9		10	
	11		12	
HEAT PUMP-33-3 (20A) #12AWG	13		14	HEAT PUMP-33-2 (20A) #12AWG
	15		16	
	17		18	
AC - 6 TON (40A) #8AWG	19		20	HEAT PUMP-33-4 (20A) #12AWG
	21		22	
	23		24	
FBR-1 (30A) #8AWG	25		26	AC - 12.5 TON (80A) #6AWG
FBR-2 (30A) #8AWG	27		28	
FBR-3 (30A) #8AWG	29		30	
HEADER TANK - 1 (20A) #12AWG	31		32	FBR-4 (30A) #8AWG
CHILLER - 1 (20A) #12AWG	33		34	HEADER TANK - 2 (20A)
CHILLER - 3 (20A) #12AWG	35		36	CHILLER - 2 (20A) #12AWG
	37		38	CHILLER - 4 (20A) #12AWG
[RESERVE FOR FV SYSTEM]	39		40	
	41		42	

PANELBOARD LP-2				
LOCATION: SECOND FLOOR		BRANCHES: 20/1 OR AS NOTED		
TYPE: EATON CH42B3225G, 225AMP RATED		BUSSING: 22 KAIC CU		
SERVICE: 208Y/120 V, 3 P/4 W		FEED: FROM FPL1		
MAIN: MLO (100 AMP FROM LP-A)		MOUNTING: FLUSH		
BRANCH CIRCUIT DESCRIPTION	CKT NO.	A B C	CKT NO.	BRANCH CIRCUIT DESCRIPTION
OUTLETS B-1	1		2	OUTLETS B-2
OUTLETS B-3	3		4	OUTLETS B-4
OUTLETS B-5	5		6	OUTLETS B-6
OUTLETS B-7	7		8	OUTLETS B-8
OUTLETS B-9	9		10	OUTLETS B-10
OUTLETS B-11	11		12	OUTLETS B-12
OUTLETS B-13	13		14	OUTLETS B-14
OUTLETS B-15	15		16	OUTLETS B-16
OUTLETS B-17	17		18	LIGHTS B-18
LIGHTS B-19	19		20	LIGHTS B-20
LIGHTS B-21	21		22	LIGHTS B-22
LIGHTS B-23	23		24	LIGHTS B-24
	25		26	
	27		28	
	29		30	
	31		32	
	33		34	
	35		36	
	37		38	
	39		40	
	41		42	

**TYPICAL LOADPANEL SCHEDULE**

REVISIONS:

MARC G. ST. JEAN, P.E.  
 ELECTRICAL ENGINEERING DESIGN  
 AND CONSULTING  
 COMMERCIAL, INDUSTRIAL AND MARINE  
 15 ESTATE DRIVE  
 EXETER, RI 02822  
 ms.j.e.redestgn@gmail.com

Drawn: 10/12/22  
 Checked: 10/12/22  
 Scale:  
 Date: 4/27/21

MATUNUCK HATCHERY  
 650 SUCCOTASH RD.  
 SOUTH KINGSTOWN, RI  
 CROSSWALK LIGHTING

PROJ: MOB-02  
 DWG. NO. E-6  
 SHEET 6 OF 6